



**ROYAL
HOUSE**

**TILE
COLLECTION**

Colorbodied-Matte



About Us:

ROYAL HOUSE is an industry-leading manufacturer and distributor of flooring products with over two decades of state-of-the-art manufacturing expertise, product innovation and development. We specialize in tile, quartz stone, and LPV. With a dedicated global supply chain management system, we have partners, distribution centers and manufacturing facilities across the globe. We annually produce millions of square meters of covering products and have supplied to some of the largest U.S. firms, including hospitality brands such as Hyatt Hotels & Resorts, Hilton, and Marriott International.

Make your dream spaces come alive with our tiles. Perfect for vanity tops, flooring and walls, our porcelain tiles are sustainably designed and made in Vietnam.

We continuously strive for perfection- from manufacturing to final product.

With family, quality, and legacy as part of our core values, we are a customer-centric firm that takes pride in offering high-quality products with timeless designs.

TABLE OF CONTENTS

Introduction	3
CONCRETE Collection	6
CHICAGO Collection	12
ROCK Collection	18
Technical Information	24

PYRAMIC SURFACE TECHNOLOGY THE PINNACLE OF INNOVATION:

Pyramid surface technology is more than a breakthrough; it is a perfect combination of slip resistance and stain resistance, ushering in a new era of luxury tile. This technology prioritizes not just safety but also the aesthetics and durability of each product.

UNIQUE FEATURES OF PYRAMID TECHNOLOGY:

Optimal slip resistance: By applying cutting-edge non-slip coating technology from Spain, Pyramic ensures safety without compromising design clarity, effectively resolving this common issue for commercial matte surfaces.

Durable and Long-lasting: Our patented formula for clay, engobe, body and firing temperature produces a higher quality and longer lasting final commodity in which Royal is confident enough to put a 10-year-guarantee on.

MODERN PRODUCTION PROCESS:

- 1. Multilayer digital printing:** By employing a multilayer digital printing method using special inks, Pyramic technology produces one-of-a-kind patterns with exceptional depths and contrast.
- 2. Top-coat:** The design is then treated with a top-coat that interacts with the special-effect inks to produce special effects that create additional depths closely resembling nature.
- 3. Nonslip diamond dry glaze:** A special diamond dry glaze is sprayed over top for state-of-the-art nonslip protection, yielding a slip resistance that rivals any “grip-finishes” on the market and a highly scratch-resistant surface with a hardness of 8 or above Mohs.

In conclusion, Pyramic provides our colorbodied top tiles with not only a high-end look and feel that encapsulates the height of luxury, but also a technological masterpiece of the highest level and quality.

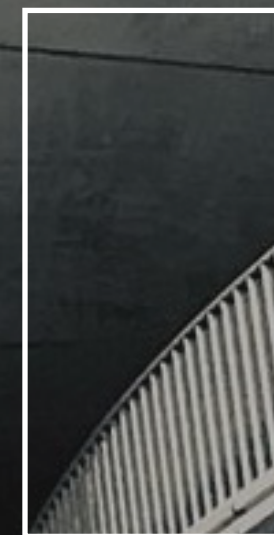
CONCRETE

Collection

Inspired by the beauty of raw concrete and terracotta, Royal House's CONCRETE collection embodies modern luxury and convenience. With its realistic textured surface and a curated selection of trendy colors, the impression it fosters is one of lightness and relaxation. Suitable for a variety of applications, including tiling gyms, patios, stores, or creating unique pictures on walls and floors, Concrete embodies minimalist elegance that is also highly liberating, making it the top pick for customers who prefer a simple, comfortable lifestyle.

Furthermore, we offers our Concrete collection in both our enhanced Planet Matte interior finish as well as a special certified-R10 matte surface using state-of-the-art Pyramic technology for exterior use, making it our most versatile selection yet -- a perfect solution if you want to seemingly extend your space beyond the confines of the interior.

SIZE



60x120cm
24"x48"



60x60cm
24"x24"



30x60cm
12"x24"



Color | LIGHT GREY

Size | 12" x 24"

24" x 24"

24" x 48"

Type | Standard

Finish | Pyramid Matte

Planet Matte

V2

Color | GREY

Size | 12" x 24"

24" x 24"

24" x 48"

Type | Standard

Finish | Pyramid Matte

Planet Matte

V2

Color | DARK GREY

Size | 12" x 24"

24" x 24"

24" x 48"

Type | Standard

Finish | Pyramid Matte

Planet Matte

V2

UA
< 0,5%
tc°
RESISTE

C5
RESISTE
C1/R9 NAT.



Color | CRÈME

Size | 12" x 24" • 24" x 48" • 24" x 24"

Type | Standard

Finish | Pyramid Matte • Planet Matte

V2



CHICAGO

Collection

The signature beauty of Royal House's Chicago Collection lies in its strong stone-like surface and elegant dark color palette that conveys luxury, class and long-lasting resilience. Featuring a curated palette of cool, beige and dark tones with bold distinctive vein movements that conjure up the memories of a twinkling cityscape bisected by cerulean canals whose skyline is dotted with both timeless bricks-and-mortars weathered by time and gleaming concrete jungles, Chicago is the ideal choice for the city-drellers who are unafraid to live boldly and indulge in their well-earned luxurious lifestyle without looking back.

SIZE



60x120cm
24"x48"



60x60cm
24"x24"



30x60cm
12"x24"



< 0,5%

tc°

RESISTE



RESISTE



UA



C5



C1 / R9 NAT.

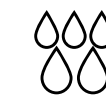


Color | IRON GREY
 Size | 12" x 24" • 24" x 24"
 Type | Standard
 Finish | Matte

V1

Color | IRON BLUE
 Size | 12" x 24" • 24" x 24"
 Type | Standard
 Finish | Matte

V1



< 0,5%

tc°

RESISTE



RESISTE



UA



C5



C1 / R9 NAT.



Color | IRON BROWN

Size | 12" x 24"

24" x 24"

Type | Standard

Finish | Matte

V1



ROCK Collection

Inspired by the world's organic wonders, Royal House's Rock Collection encapsulates the timeless quality of real stones: durable, enduring, intricately woven patterns formed via milleniums of infinitesimal crystalization that could only be replicated using state-of-the-art digital printing technology. Featuring our enhanced Planet Matte glazing technology which employs the finest glazing particles to retain the clarity and depth of the designs -- thus allowing the distinctive vein movements intended to vividly recreates the exquisite patterns of natural stone to shine through -- each patterns under Rock is meticulously curated to strike the perfect balance between vivid naturalistic details and minimalist elegance. As a result, not only do they contribute to building a warm and welcoming lived-in environment, but, given the material's higher surface hardness, breaking strength and anti-slip properties than that of ordinary tiles, they also add to long-term sustainability and durability to any architectural space .

The Rock Collection epitomizes what it means to live in harmony with nature, but with the convenience of modern manmade luxury.

SIZE



30x60cm
12"x24"



60x60cm
24"x24"



< 0,5%

tc°

RESISTE



RESISTE



UA



C5



C1 / R9 NAT.



Color | BLUE MISSION

Size | 12" x 24" • 24" x 24"

Type | Standard

Finish | Matte

V1

V3

Color | RUST

Size | 12" x 24" • 24" x 24"

Type | Standard

Finish | Matte

V3

V1



< 0,5%

tc°

RESISTE



RESISTE



UA



C5



C1 / R9 NAT.



Color | SILVER MISSION

Size | 12" x 24"

24" x 24"

Type | Standard


Finish | Matte

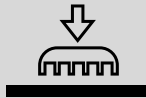
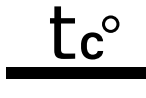




V1

V3



TECHNICAL INFORMATION

PROPERTIES	ICON	INDUSTRY REQUIREMENT	RESULTS		TESTING METHOD
			PLANET MATTE	PYRAMIC MATTE	
Size		±0.5%	±0.3mm	±0.3mm	ISO 10545-2
Thickness		±5%	±5%	±5%	ISO 10545-2
Straightness of sides		±0.5%	±0.2%	±0.2%	ISO 10545-2
Rectangularity of Sides		±0.5%	±0.2%	±0.2%	ISO 10545-2
Sides curvature		±0.5%	±0.2%	±0.2%	ISO 10545-2
Center curvature		±0.5%	±0.2%	±0.2%	ISO 10545-2
Water absorption		≤ 0.5%	≤ 0.5%	≤ 0.5%	ISO 10545-3
Breaking strength		≥1300N	≥1700N	≥1500N	ISO 10545-4

PROPERTIES	ICON	INDUSTRY REQUIREMENT	RESULTS		TESTING METHOD
			PLANET MATTE	PYRAMIC MATTE	
Modulus of rupture		≥ 35 N/mm2	≥ 35 N/mm2	≥ 35 N/mm2	ISO 10545-4
Abrasion resistance		-	≥ 35 N/mm2	≥ 35 N/mm2	ISO 10545-7
Thermal shock resistance		Ten cycles	Class III, IV	Class III, IV	ISO 10545-9
Stain resistance		Min class 3	Ten cycles	Ten cycles	ISO 10545-14
Crazing resistance		Pass	Min class 4	Min class 4	ISO 10545-11
Chemical resistance		Min Class B	Pass	Pass	ISO 10545-13
Resistance to freeze		Pass	Class A	Class A	ISO 10545-12
DCOF		-	Pass	Pass	A 137.1
Glossy		-	Wet: Min 0.58	Wet: Min 0.42	ASTM D523



CALIFORNIA HEADQUARTERS

3233 W Castor Street, Santa Ana, CA 92704

[P] (714) 277-3464 [F] (714) 224-0899

TEXAS HEADQUARTERS

22505 Imperial Valley Dr., Ste 105 – Houston, TX 77073

[P] (281) 784 – 2240 [F] (832) 583 – 0098