

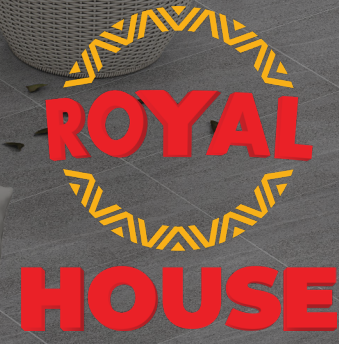


ROYAL

HOUSE

**TILE
COLLECTION**

Standard-Core



About Us:

ROYAL HOUSE is an industry-leading manufacturer and distributor of flooring products with over two decades of state-of-the-art manufacturing expertise, product innovation and development. We specialize in tile, quartz stone, and LPV. With a dedicated global supply chain management system, we have partners, distribution centers and manufacturing facilities across the globe. We annually produce millions of square meters of covering products and have supplied to some of the largest U.S. firms, including hospitality brands such as Hyatt Hotels & Resorts, Hilton, and Marriott International.

Make your dream spaces come alive with our tiles. Perfect for vanity tops, flooring and walls, our porcelain tiles are sustainably designed and made in Vietnam.

We continuously strive for perfection- from manufacturing to final product.

With family, quality, and legacy as part of our core values, we are a customer-centric firm that takes pride in offering high-quality products with timeless designs.

TABLE OF CONTENTS

Introduction	3
CARIBOU Collection	4
SANDSTONE Collection	10
EARTH Collection	18
MARMOL Collection	24
Technical Information	34

CARIBOU

Collection

Discover timeless elegance with the CARIBOU Collection, offering a natural palette for a premium, classic statement in any space. The gentle vein cuts bring graceful sophistication to every layout, creating a perfect blend of grace and modern elegance. CARIBOU is available in both matte and lappato finishes. The Lappato finish adds a modern touch, brightening up any space, while the matte finish creates a classic and inviting atmosphere. Choose CARIBOU for a collection that seamlessly combines modernity with timeless charm, enhancing the aesthetic of your surroundings.

SIZE



60x120cm
24"x48"



30x60cm
12"x24"



Color | WHITE
Size | 12" x 24"
24" x 48"
Type | Standard
Finish | Matte/Lapato

V3




Color | LIGHT GREY
Size | 12" x 24"
24" x 48"
Type | Standard
Finish | Matte/Lapato

V3



Color | DARK GREY
Size | 12" x 24"
24" x 48"
Type | Standard
Finish | Matte/Lapato

V3


UA

< 0,5%
tc°
RESISTE


C5

RESISTE

C1 / R9 NAT.



Color | BEIGE

Size | 12" x 24"

24" x 48"

Type | Standard

Finish | Matte/Lapato

V2



SANDSTONE

Collection

Experience the perfect blend of tradition and modern elegance with the Sandstone Collection. This collection beautifully captures the organic beauty of natural crystallization in sandstones. Featuring a palette of natural sandstone colors and subtle veins, these coverings exude class, durability, and coziness. Elevate your space with the timeless appeal of the Sandstone Collection, where tradition meets contemporary style, creating surfaces that are both sophisticated and enduring.

SIZE



60x120cm
24"x48"



30x60cm
12"x24"



< 0,5%

tc°

RESISTE



RESISTE



UA



C5



C1 / R9 NAT.



Color | PERLA

Size | 12" x 24" • 24" x 48"

Type | Standard

Finish | Matte

V2



Color | GRIS

Size | 12" x 24" • 24" x 48"

Type | Standard

Finish | Matte

V2



< 0,5%

tc°

RESISTE



RESISTE



UA



C5



C1 / R9 NAT.



< 0,5%

t_c°

RESISTE



RESISTE



UA



C5



C1 / R9 NAT.



Color | ROCA

Size | 12" x 24" • 24" x 48"

Type | Standard

Finish | Matte

V2

Color | NEGRO

Size | 12" x 24" • 24" x 48"

Type | Standard

Finish | Matte

V2



< 0,5%

t_c°

RESISTE



RESISTE



UA



C5



C1 / R9 NAT.



Color | CAFE

Size | 12" x 24" • 24" x 48"

Type | Standard

Finish | Matte

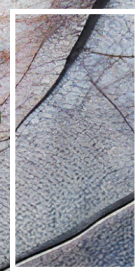
V2



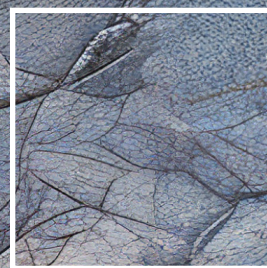
EARTH Collection

Immerse yourself in the tranquility of nature with the Earth Collection, capturing the serenity and raw elements of the earth. Featuring unique Travertine cross-cut designs, this collection offers a stone look with distinctive veining that sets it apart. The vibrant colors bring contrast and bold elegance to both indoor and outdoor spaces. Choose the Earth Collection for a touch of nature's beauty, creating surfaces that uniquely combine a natural aesthetic with bold and elegant design.

SIZE



30x60cm
12"x24"



60x60cm
24"x24"



Color | MOUNTAIN

Size | 12" x 24" • 24 x 24"

Type | Standard

Finish | Lappato

V4

Color | RIVER

Size | 12" x 24" • 24 x 24"

Type | Standard

Finish | Lappato

V4

Color | DESERT

Size | 12" x 24" • 24 x 24"

Type | Standard

Finish | Lappato

V4



UA



< 0,5%

t_c

RESISTE



C5



RESISTE



C1 / R9 NAT.



Color | OCEAN

Size | 12" x 24" • 24" x 24"

Type | Standard

Finish | Lappato

V4



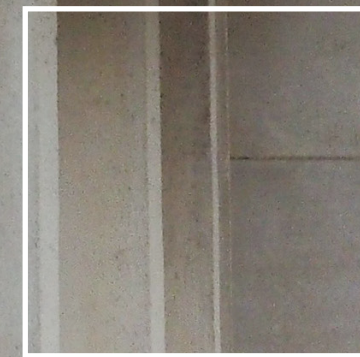
MARMOL Collection

Experience the luxury of MARMOL, a collection that mirrors real ivory marble. With finishes in Matte, Lappato, and Diamond-Polished, it offers a versatile selection for every room. The MARMOL Collection not only brightens interiors but also adds a natural shine, reflecting the beauty of natural sunlight. Choose MARMOL for the perfect fusion of elegance and versatility in flooring, bringing timeless sophistication to any space.

SIZE



60x120cm
24"x48"



80x80cm
32"x32"



60x60cm
24"x24"



30x60cm
12"x24"



< 0,5%

tc°

RESISTE



RESISTE



UA



C5



C1 / R9 NAT.



Color | CARRERA

Size | 12" x 24" • 24" x 48" •
32" x 32"

Type | Standard

Finish | Matte

Diamond Polished

V3



Color | CAPPUCCINO

Size | 12" x 24" • 24" x 48" •
32" x 32"

Type | Standard

Finish | Matte

Diamond Polished

V3



< 0,5%

tc°

RESISTE



RESISTE



UA



C5



C1 / R9 NAT.



V3

Color | ASPEN

Size | 12" x 24" • 24" x 48" • 32" x 32"

Type | Standard

Finish | Matte/ Diamond Polished





< 0,5%

tc°

RESISTE



RESISTE



UA



C5



C1 / R9 NAT.



Color | HARLEQUINN

Size | 12" x 24" • 24" x 24"
24" x 48"

Type | Standard

Finish | Lappato

Diamond Polished

V3

Color | MARQUINA NOIR

Size | 12" x 24" • 24" x 48"
32" x 32"

Type | Standard

Finish | Matte

Diamond Polished

V3



< 0,5%

tc°

RESISTE



RESISTE



UA



C5



C1 / R9 NAT.



Color | WHITE LOTUS

Size | 12" x 24" • 24" x 48" • 32" x 32"


Type | Standard

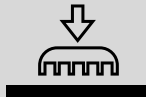





Finish | Matte/Diamond Polished

V3




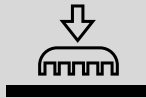





TECHNICAL INFORMATION

PROPERTIES	ICON	INDUSTRY REQUIREMENT	RESULTS		TESTING METHOD
			REGULAR POLISHED	DIAMOND-POLISHED	
Size		±0.5%	±0.3mm	±0.3mm	ISO 10545-2
Thickness		±5%	±5%	±5%	ISO 10545-2
Straightness of sides		±0.5%	±0.2%	±0.2%	ISO 10545-2
Rectangularity of Sides		±0.5%	±0.2%	±0.2%	ISO 10545-2
Sides curvature		±0.5%	±0.2%	±0.2%	ISO 10545-2
Center curvature		±0.5%	±0.2%	±0.2%	ISO 10545-2
Water absorption		≤ 0.5%	≤ 0.5%	≤ 0.5%	ISO 10545-3
Breaking strength		≥1300N	≥1300N	≥1500N	ISO 10545-4

PROPERTIES	ICON	INDUSTRY REQUIREMENT	RESULTS		TESTING METHOD
			REGULAR POLISHED	DIAMOND-POLISHED	
Modulus of rupture		≥ 35 N/mm ²	≥ 35 N/mm ²	≥ 35 N/mm ²	ISO 10545-4
Abrasion resistance		-	Class II	Class II	ISO 10545-7
Thermal shock resistance		Ten cycles	Ten cycles	Ten cycles	ISO 10545-9
Stain resistance		Min class 3	Class 5	Class 5	ISO 10545-14
Crazing resistance		Pass	Pass	Pass	ISO 10545-11
Chemical resistance		Min class 3	Class 5	Class 5	ISO 10545-14
Resistance to freeze		Pass	Pass	Pass	ISO 10545-12
DCOF		-	Dry: Min 0.42	Dry: Min 0.42	A 137.1
Glossy		-	≥ 870	≥920	ASTM D523

TECHNICAL INFORMATION

PROPERTIES	ICON	INDUSTRY REQUIREMENT	RESULTS- MATTE PORCELAIN	TESTING METHOD
Size		±0.5%	±0.3mm	ISO 10545-2
Thickness		±5%	±5%	ISO 10545-2
Straightness of sides		±0.5%	±0.2%	ISO 10545-2
Rectangularity of Sides		±0.5%	±0.2%	ISO 10545-2
Sides curvature		±0.5%	±0.2%	ISO 10545-2
Center curvature		±0.5%	±0.2%	ISO 10545-2
Water absorption		≤ 0.5%	≤ 0.5%	ISO 10545-3
Breaking strength		≥1300N	≥1300N	ISO 10545-4

PROPERTIES	ICON	INDUSTRY REQUIREMENT	RESULTS- MATTE PORCELAIN	TESTING METHOD
Modulus of rupture		≥ 35 N/mm2	≥ 35 N/mm2	ISO 10545-4
Abrasion resistance		-	Class III	ISO 10545-7
Thermal shock resistance		Ten cycles	Ten cycles	ISO 10545-9
Stain resistance		Min class 3	Class 5	ISO 10545-14
Crazing resistance		Pass	Pass	ISO 10545-11
Chemical resistance		Min class 3	Class A	ISO 10545-13
Resistance to freeze		Pass	Pass	ISO 10545-12
DCOF		-	Wet: Min 0.42	A 137.1
Morh hardness		-	5	EN 15771



CALIFORNIA HEADQUARTERS

3233 W Castor Street, Santa Ana, CA 92704

[P] (714) 277-3464 [F] (714) 224-0899

TEXAS HEADQUARTERS

22505 Imperial Valley Dr., Ste 105 – Houston, TX 77073

[P] (281) 784 – 2240 [F] (832) 583 – 0098